

CHR[®] 2255

Skived, High Modulus PTFE Pressure Sensitive Adhesive Tape

CHR 2255 is manufactured from modified high-modulus PTFE film coated with high-temperature silicone adhesive.

Features/Benefits

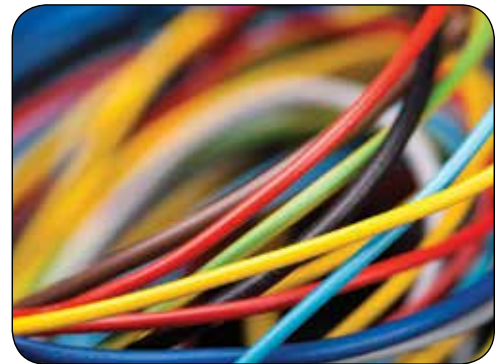
CHR 2255's most outstanding properties are its high dielectric and tensile strength, which make it an extremely durable insulation tape. The high-temperature properties of the PTFE and silicone adhesive allow 2255 to perform in continuous temperatures up to 260°C (500 °F). As high-modulus tape, **CHR** 2255 also exhibits low elongation which enables it to be applied with automatic wrapping equipment. The other outstanding features of 2255 include chemical inertness as well as low-friction, anti-stick and non-toxic properties, making it the right material for numerous applications. 2255 meets MIL-I-23594C U.S. Government specifications.

Availability

Factory stock for 2255-2 is in master log form 33 m x 584 mm (36 yd x 23 in), for 2255-3 and 2255-5 33 m x 406 mm (36 yd x 16 in). Rolls can be slit in widths ranging from 6.35 mm (0.25 in) to full width. **CHR** 2255 can also be etched on the topside for bondability and may as well be supplied with a release liner. **CHR** 2255-2 is also available with a pigmented black adhesive – properties are unchanged.

Applications

The excellent dielectric properties of this product combined with its high-temperature adhesive coating make 2255 an excellent choice as a high-temperature insulation product. **CHR** 2255 is used in phase insulation for bundling end turns, spot bundling and anchoring breakouts. The aerospace industry also uses 2255 to protect airframe wire harnesses.



CHR 2255 Properties

Performance tests are run using standard test procedures.

The values presented are typical values and should not be used for specification purposes.

Product Number	2255-2	2255-3	2255-5	2255-6
Backing Material	Film-PTFE	Film-PTFE	Film-PTFE	Film-PTFE
Adhesive Type	Silicone	Silicone	Silicone	Silicone
Total Thickness mm (mil)	0.089 (3.5)	0.114 (4.5)	0.165 (6.5)	0.191 (7.5)
Backing Thickness mm (mil)	0.051 (2.0)	0.076 (3.0)	0.127 (5.0)	0.152 (6.0)
Adhesive Thickness mm (mil)	0.038 (1.5)	0.038 (1.5)	0.038 (1.5)	0.038 (1.5)
Adhesion to Steel N/cm (oz/in)	3.3 (30)	3.8 (35)	4.4 (40)	4.9 (45)
Tensile Strength N/cm (lb/in)	53 (30)	79 (45)	105 (60)	114 (65)
Dielectric Strength (volts)	9,000	11,000	15,000	18,000
Elongation (% at break)	150	175	200	200
Operating Temperature °C (°F)	-73 to +260 (-100 to +500)	-73 to +260 (-100 to +500)	-73 to +260 (-100 to +500)	-73 to +260 (-100 to +500)
Color	Grey	Grey	Grey	Grey



Performance Plastics - Tape Solutions

North America | South America | Europe | Asia

For a full list of locations, please visit
tapesolutions.saint-gobain.com/contact-us

IMPORTANT: It is the user's responsibility to ensure the suitability and safety of Saint-Gobain Performance Plastics products for all intended uses and that the materials to be used comply with all applicable regulatory requirements. Saint-Gobain Performance Plastics assumes no responsibility for any product failures that occur due to misuse of the materials it provides arising out of the design, fabrication or application of the products into which the materials are incorporated.

WARRANTY: For a period of 6 months, Saint-Gobain Performance Plastics warrants this product(s) to be free from defects in manufacturing. The only obligation under any applicable product warranty will be to replace any portion proving defective, or at our option, to refund the purchase price thereof. SAINT-GOBAIN PERFORMANCE PLASTICS DISCLAIMS ALL IMPLIED WARRANTIES OF MERCHANTABILITY AND FITNESS FOR A PARTICULAR PURPOSE.

Form #1150 | © Saint-Gobain April 2018 | **CHR** and **CHRTape** are trademarks of Saint-Gobain.