

CHR[®] 2253/2254

Skived, High Modulus PTFE Pressure Sensitive Adhesive Tape

CHR 2253 and **2254** are manufactured by **Saint-Gobain[®]** Performance Plastics Corporation, Tape Solutions business, and come with modified PTFE film coated with pressure-sensitive adhesive.

Features/Benefits

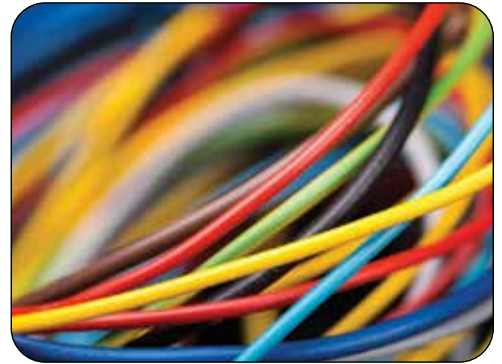
Their most outstanding properties are its high dielectric and tensile strength, which make it an extremely durable insulation tape. The high temperature properties of the PTFE and adhesive allow it to perform in continuous temperatures up to 177°C or 260°C (350°F or 500°F). A high-modulus tape, they exhibit low elongation which enables it to be applied with automatic wrapping equipment. The other outstanding features include chemical inertness as well as low friction, anti-stick, non-toxic properties and clean release, making it the right material for numerous applications.

Availability

Factory stock is in master log form 33 m x 584 mm (36 yd x 23 in) wide. Rolls can be slit in widths ranging from 12.7 mm to 584 mm (0.5 in to 23 in). **CHR 2253-2** is available with or without a liner. **CHR 2254-2** is available with or without a liner, or etched topside for bondability.

Applications

The excellent conformability and release properties of the PTFE backing, along with the high temperature capability of the adhesive, make these tapes ideal for applications such as composite lay-up, roller wrapping, plate masking, heat sealing and other uses where costly clean up is a problem. The aerospace industry can also use these tapes in phase insulation for bundling end turns, spot bundling, anchor breakouts and to protect airframe wire harnesses.



CHR 2253/2254 Properties

Performance tests are run using standard test procedures.

The values presented are typical values and should not be used for specification purposes.

Product Number	2253-2	2254-2
Backing Material	Film-PTFE	Film-PTFE
Adhesive Type	Acrylic	Silicone
Total Thickness mm (mil)	0.089 (3.5)	0.089 (3.5)
Backing Thickness mm (mil)	0.051 (2.0)	0.051 (2.0)
Adhesive Thickness mm (mil)	0.038 (1.5)	0.038 (1.5)
Adhesion to Steel N/cm (oz/in)	3.3 (30)	3.8 (35)
Tensile Strength N/cm (lb/in)	53 (30)	53 (30)
Dielectric Strength (volts)	9,500	9,500
Elongation (% at break)	150	150
Operating Temperature °C (°F)	-40 to +177 (-40 to +350)	-73 to +260 (-100 to +500)
Colour	Grey	Grey

IMPORTANT: It is the user's responsibility to ensure the suitability and safety of Saint-Gobain products for all intended uses and that the materials to be used comply with all applicable regulatory requirements. Saint-Gobain assumes no responsibility for any product failures that occur due to your actions or inactions, including your use, design, fabrication or application of the products into which the materials are incorporated.

WARRANTY: This document should not be considered a warranty or a guarantee. The descriptions of the Product provided hereinabove may vary based on specifications requested and testing protocols. Typically, Saint-Gobain warrants that product(s) will meet mutually agreed specifications at delivery and Saint-Gobain honors any breach of warranty claims for six (6) months from delivery of the products. If a product is determined to be nonconforming with its warranty, Saint-Gobain's sole obligation is, at its option, to either replace the nonconforming products or reimburse the purchase price for the same.

The only obligation under any applicable product warranty will be to replace any portion proving defective, or at our option, to refund the purchase price thereof. SAINT-GOBAIN DISCLAIMS ALL OTHER EXPRESS OR IMPLIED WARRANTIES OF MERCHANTABILITY, FITNESS FOR A PARTICULAR PURPOSE OR USE.

Form #1149 | © Saint-Gobain February 2025 | All the mentioned trademarks are registered trademarks of Saint-Gobain Tape Solutions or affiliates, part of Saint-Gobain group.



TAPE SOLUTIONS

North America | South America
Europe | Asia

For more information, please visit
tapesolutions.saint-gobain.com